

Key Investor Information

This document provides you with key investor information about this Fund. It is not marketing material. The information is required by law to help you understand the nature and the risks of investing in this Fund.

You are advised to read it so you can make an informed decision about whether to invest.

Fideuram Fund Equity Global Emerging Markets

Sub-Fund of Fideuram Fund (ISIN LU0096650485)

Management Company: Fideuram Asset Management (Ireland) dac, Intesa Sanpaolo banking group

OBJECTIVES AND INVESTMENT POLICY

The Sub-Fund, expressed in Euro, consists essentially in equity transferable securities either with their registered office or their main economic activity in an emerging market country, or listed on an official stock exchange, or dealt in on another regulated market of an emerging market country as well as in countries in which such issuers are also listed (for example: New York Stock Exchange, Hong Kong Stock Exchange). The emerging market country can be located in every continent, although the Sub-Fund shall concentrate essentially in investment in emerging countries of Asia, Latin America and Eastern Europe. The Sub-Fund may invest in China A-shares via the Shanghai-Hong Kong Stock Connect program which allows foreign investors to trade certain Shanghai Stock Exchange listed China A-Shares through Hong Kong based brokers. The Sub-Fund may use financial derivative instruments not only for the purpose of risk hedging and efficient management but also for investment purposes. The benchmark of the Sub-Fund consists of the index "MSCI Emerging Markets" Price Return in USD converted in EUR. The Sub-Fund is managed following an investment process that entails selecting stocks within or outside the reference

benchmark. The screening process and portfolio construction are based on quantitative and qualitative criteria in particular, financial indicators pertaining to the business of the target issuer. The whole investment process aims at outperforming the benchmark, without tracking it. This aim is not a guarantee and, in normal conditions, the sub-fund portfolio allocation will not be similar to the benchmark. While maintaining an active management style, the Sub-Fund performance and portfolio allocation can be closer to the benchmark under certain circumstances as detailed in the Management Regulations. The Sub-fund is actively managed and the degree of freedom allowed within the management of the sub-fund is limited. The relative risk and positioning to the benchmark is monitored. To provide a disciplined management approach, risk limits are set to contain investment risk. This may impact the extent to which the composition of the portfolio and its performance deviate from that of the benchmark. This is a capitalization Sub-Fund. You may request to redeem the units held at any moment, by sending a request on any bank business day to the Management Company.

RISK AND REWARD PROFILE

Lower risk
Potential lower
reward

Higher risk
Potential higher
reward



- This Sub-Fund is classified in the risk and reward category 6 because the investments value can be subject to high daily variation, both positive and negative.
- The historical data such as is used to calculate the synthetic risk and reward indicator may not be a reliable indication for the future risk profile of the Sub-Fund.
- The risk and reward category shown is not guaranteed to remain unchanged and the categorization of the Sub-Fund may shift over time.
- Even the lowest risk category does not mean a risk-free investment.

THE SYNTHETIC RISK AND REWARD INDICATOR DOES NOT ADEQUATELY CAPTURE THE FOLLOWING RISKS:

- **Developing market risk:** The Sub-Fund is exposed to securities highly sensitive to political and economic instability of developing countries such as civil conflicts, changes in

- government policies and in taxation, currency fluctuations and other developments in the laws and regulations of countries in which investments may be made. Price changes may be higher than those in the markets of developed countries.
- **China Risk:** Investing in the People's Republic of China (PRC) is subject to the risks of investing in emerging markets and additional risks, which are specific to the PRC market. In case of investment in China A shares and/or in debt securities issued by Mainland China issuers where securities are held in custody on a cross-border basis, there are specific legal/beneficial ownership risks linked to compulsory requirements of the local central securities depositories.

CHARGES

These fees and charges are used to pay the costs of running the Sub-Fund, including the costs of marketing and selling. They reduce the potential growth of your investment.

One-off charges taken before or after the investment

Entry fee	3.80 %
Exit fee	0.00 %

Maximum percentage that can be withdrawn from your capital before it will be invested or before the return is distributed.

Charges taken from the Sub-Fund over a year

Ongoing charges	1.34 %
-----------------	--------

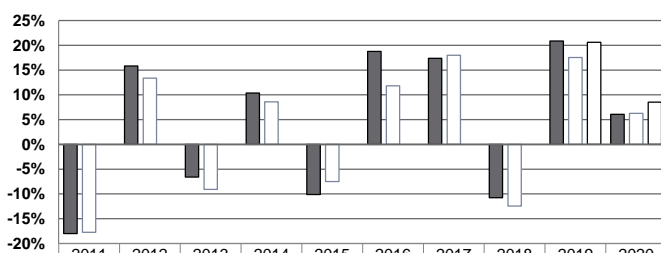
Charges taken from the Sub-Fund under certain specific conditions

Performance fee	0.00 %
-----------------	--------

The **entry** and **exit fees** shown in the chart are maximum figures. In some cases you might pay less. You can find this out from your financial adviser or from the distributors. The switch fees differ from the entry fees. The **ongoing charges** figure is based on expenses for the year ending **31/12/2020**. This figure may vary from year to year. It excludes performance fees and portfolio transaction costs, except in the case of an entry/exit fee paid by the Sub-Fund when buying or selling units in another fund.

For more information about charges and fees, including the information of the calculation criteria of the performance fees, please see section "Charges" of the Fund's Prospectus, available on the website www.fideuramireland.ie.

PAST RESULTS



	2011	2012	2013	2014	2015	2016	2017	2018	2019	2020
■ Fund	-18.0%	15.8%	-6.6%	10.4%	-10.1%	18.8%	17.4%	-10.8%	20.9%	6.1%
□ Benchmark	-17.7%	13.4%	-9.1%	8.6%	-7.5%	11.8%	18.0%	-12.4%	17.6%	6.3%
□ NTR Index									20.6%	8.5%

Past performance is not a reliable guide to future performance.

Date of setting up of the Fund: March 30th, 1999.

Launch date of the Sub-Fund: October 10th, 2003.

The past performance of the Sub-Fund is calculated in Euro. The past performance indicated herein takes into account all the costs and charges, with the exception of the entry, exit and switch charges. The Total Return Index figures displayed in this section of the KIID are calculated on the basis that any distributable income of the benchmark components have been reinvested.

PRACTICAL INFORMATION

This document contains the Key Investor Information on Fideuram Fund Equity Global Emerging Markets.

Depository of the Fund: STATE STREET BANK INTERNATIONAL GmbH, Luxembourg Branch

Copies of the Fund's Prospectus and of the latest annual and half-yearly reports may be obtained free of charge at any moment at the registered office of the Management Company as well as at the offices of STATE STREET BANK INTERNATIONAL GmbH, Luxembourg Branch. Details of the remuneration policy, including the persons in charge of determining the fixed and variable remunerations of the staff, a description of the key remuneration elements and an overview of how remuneration is determined, is available on the website http://www.fideuramireland.ie/upload/File/pdf/Policy_FAMI/FAMI_Remuneration_Policy.pdf.

A paper copy of the summarised remuneration policy is available free of charge upon request.

For information on Reg. 2019/2088 ("SFDR"), please refer to the "Sustainability" section on the website www.fideuramireland.ie

The latest price of the unit is available every business day in Luxembourg at the office of the Depository and on the website www.fideuramireland.ie.

FIDEURAM ASSET MANAGEMENT (IRELAND) dac may be held liable solely on the basis of any statement contained in this document that is misleading, inaccurate or inconsistent with the relevant parts of the Fund's Prospectus.

The Fund is subject to the Luxembourg tax legislation. Said legislation may have an impact on your personal tax position.

This Fund is divided into multiple sub-funds. The assets and liabilities of this Sub-Fund are separate from those of other sub-funds.

The units may only be subscribed under "UNI" contract with unique payments.

The financial rights of the investors in this Sub-Fund are totally distinct from those of the investors in other sub-funds. You may switch in any time the units of the Sub-Fund with units of other sub-funds. Information on the switching right procedures are set out in section "Switch of Units" of the Fund's Prospectus.

The Prospectus, the latest annual report and the half-yearly report are drawn up for the Fund as a whole indicated in the heading of the present document.