

Key Investor Information



This document provides you with key investor information about this Fund. It is not marketing material. The information is required by law to help you understand the nature and the risks of investing in this Fund. You are advised to read it so you can make an informed decision about whether to invest.

Fonditalia Euro Yield Plus

Sub-Fund of Fonditalia

Class R (ISIN LU0138257935) / Class S (ISIN LU0553726679) / Class T (ISIN LU0388709635)

Management Company: Fideuram Asset Management (Ireland) dac, Intesa Sanpaolo banking group

OBJECTIVES AND INVESTMENT POLICY

The Sub-Fund, expressed in Euro, consists essentially of debt transferable securities denominated in Euro and issued by governmental and non-governmental issuers characterized by a limited insolvency risk. The sub-fund will invest in debt securities at a fixed and variable rate.

The sub-fund may hold deposits. Moreover the sub-fund may invest in money market instruments up to 10% of its net assets. The sub-fund can occasionally invest up to 10% of its net assets in sub-investment grade debt transferable securities.

The sub-fund may invest in debt transferable securities denominated in currencies other than the reference currency (Euro). The currency exposure will be generally hedged back into EURO.

The Sub-Fund may use financial derivative instruments not only for the purpose of risk hedging but also for investment purposes.

This Sub-Fund is suitable for investors who search short-term investments.

The Sub-Fund has no benchmark. The Sub-fund is actively managed. This Sub-Fund has three Unit-Classes: Class R, S and T.

R and T are capitalization Unit-Classes. With reference to the Unit-Class S, the net incomes of the Sub-Fund will be distributed in accordance with the Prospectus of the Fund.

You may request to redeem the units held at any moment, by sending a request on any business day.

RISK AND REWARD PROFILE

Lower risk

Potential lower reward



Higher risk

Potential higher reward

- This Sub-Fund is classified in the risk and reward category 2 because the investments' value shows low fluctuations, both positive and negative.
- The historical data such as is used to calculate the synthetic risk and reward indicator may not be a reliable indication for the future risk profile of the Sub-Fund.
- The risk and reward category shown is not guaranteed to remain unchanged and the categorization of the Sub-Fund may shift over time.
- Even the lowest risk category does not mean a risk-free investment.

THE SYNTHETIC RISK AND REWARD INDICATOR DOES NOT ADEQUATELY CAPTURE THE FOLLOWING RISKS:

- **Credit risk:** The Sub-Fund invests in securities whose credit rating may get worse, increasing the risk that the issuer is unable to fulfil its commitments with a negative impact on the securities' price.
- **Liquidity risk:** The Sub-Fund invests in markets that can be characterized by a reduced possibility to exchange securities without a negative impact on prices.

CHARGES

These fees and charges are used to pay the costs of running the Sub-Fund, including the costs of marketing and selling. They reduce the potential growth of your investment.

One-off charges taken before or after the investment

Entry fee	1.50 %
Exit fee	0.00 %

Maximum percentage that can be withdrawn from your capital before it will be invested or before the return is distributed.

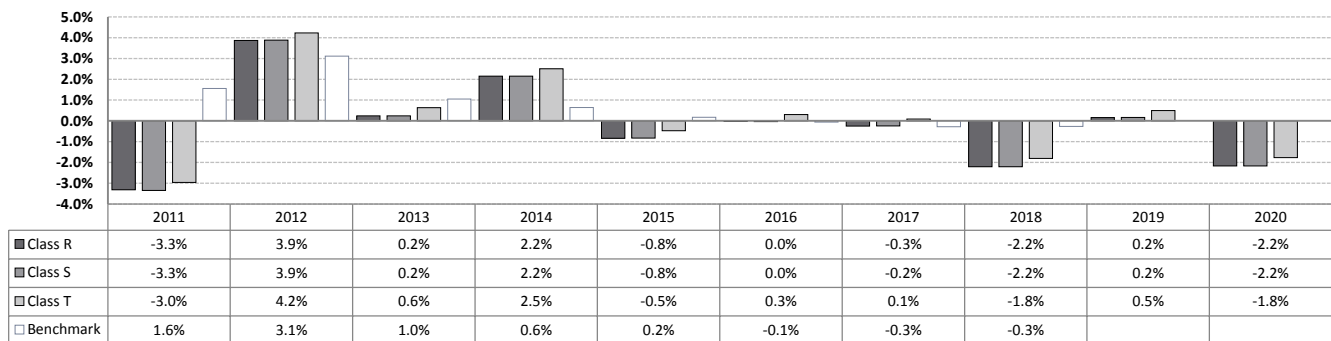
	Ongoing charges Charges taken from the Sub-Fund over a year	Performance fee Charges taken from the Sub-Fund under certain specific conditions
Class R	1.34 %	15.00 %, yearly calculated, of the difference - if positive - between the NAV increase and the increase of the theoretical NAV in case the performance is equal to the index "JP Morgan Euro Cash 12 months". In 2020 the performance fee of the Classes R, S and T were equal to 0%.
Class S	1.34 %	
Class T	0.94 %	

The entry and exit fees shown in the chart are maximum figures. In some cases you might pay less. You can find this out from your financial adviser or from the distributors. For the switch of units, you may choose alternatively two systems of fees: the tariff "by transaction" and the tariff "fixed" (applied on a quarterly basis on the capital invested). The ongoing charges figure is based on expenses for the year ending on 31/12/2020. This figure may vary from year to year.

It excludes performance fees and portfolio transaction costs, except in the case of an entry/exit fee paid by the Sub-Fund when buying or selling units in another fund.

For more information about charges and fees, including the information of the calculation criteria of the performance fees, please see section "Charges" of the Fund's Prospectus, available on the website www.fideuramireland.ie.

PAST RESULTS



Past performance is not a reliable guide to future performance. Date of setting up of the Fund: August 11th, 1967. Launch date of the Sub-Fund: January 11th 2002. The past performance of the Sub-Fund is calculated in Euro. The past performance indicated herein takes into account all the costs and charges, with the exception of the entry, exit and switch charges.

PRACTICAL INFORMATION

This document contains the Key Investor Information on Fonditalia Euro Yield Plus Unit-Classes R, S and T.

Depository of the Fund: STATE STREET BANK INTERNATIONAL GmbH, Luxembourg Branch

Copies of the latest annual and half-yearly reports and of the Fund's Prospectus may be obtained free of charge at any moment at the registered office of the Management Company as well as at the offices of STATE STREET BANK INTERNATIONAL GmbH, Luxembourg Branch and of the distributor. Details of the remuneration policy, including the persons in charge of determining the fixed and variable remunerations of the staff, a description of the key remuneration elements and an overview of how remuneration is determined, is available on the website http://www.fideuramireland.ie/upload/File/pdf/Policy_FAMI/FAMI_Remuneration_Policy.pdf. A paper copy of the summarized remuneration policy is available free of charge upon request. For information on Reg. 2019/2088 ("SFDR"), please refer to the "Sustainability" section on the website www.fideuramireland.ie. The latest price of the unit is available every business day in Luxembourg at the offices of the Depository and on the website www.fideuramireland.ie. FIDEURAM ASSET MANAGEMENT

(IRELAND) dac may be held liable solely on the basis of any statement contained in this document that is misleading, inaccurate or inconsistent with the relevant parts of the Fund's Prospectus. The Fund is subject to the Luxembourg tax legislation. Said legislation may have an impact on your personal tax position. This Fund is divided into multiple sub-funds. The assets and liabilities of this Sub-Fund are separate from those of other sub-funds.

The financial rights of the investors of this Sub-Fund are totally distinct from those of the investors of other Sub-Funds. The Unit-Classes R and S may be subscribed with a unique initial payment under "UNI" contract or with spread out payments under "PLURI" contract.

The Unit-Class T may only be subscribed under "UNI" contract with a unique initial payment.

You may switch at any time the units of the Sub-Fund with units of other sub-funds. Information on the switching right procedures are set out in section "Switch of Units" of the Fund's Prospectus.

The Prospectus, the latest annual report and the half-yearly report are drawn up for the Fund as a whole as indicated in the heading of the present document.